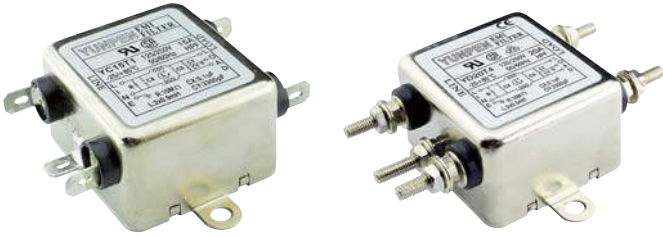


# YC, YD SERIES (Single Phase One-Stage Filters)



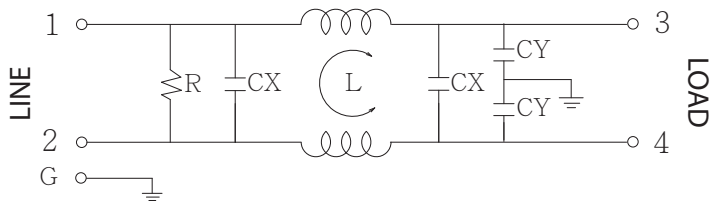
## Features

- The YC and YD series are general purpose single phase one-stage filter.
- The rated current can be offered up to 20 amps.
- Various output selections such as fast-on terminal, M4 screw terminals and lead wire.
- Low leakage current version upon requested.
- Approved by UL, CSA, VDE and CE
- Custom-specific versions are available on request
- Application for Electrical and electronic equipment, Household equipment, Automation equipment, Fitness machine, Medical equipment

## Technical Specification

Rated voltage	125/250VAC
Rated currents	Up to 20A
Operating frequency	50/60Hz
Hipot rating(Line-to-line)	1450VDC
Hipot rating(Line-to-ground)	2250VDC
Operating temperature	-25~+85°C
Safety compliance	YC series (UL,CSA,CE) ; YD series (UL,CSA,VDE,CE)

## Typical electrical schematic

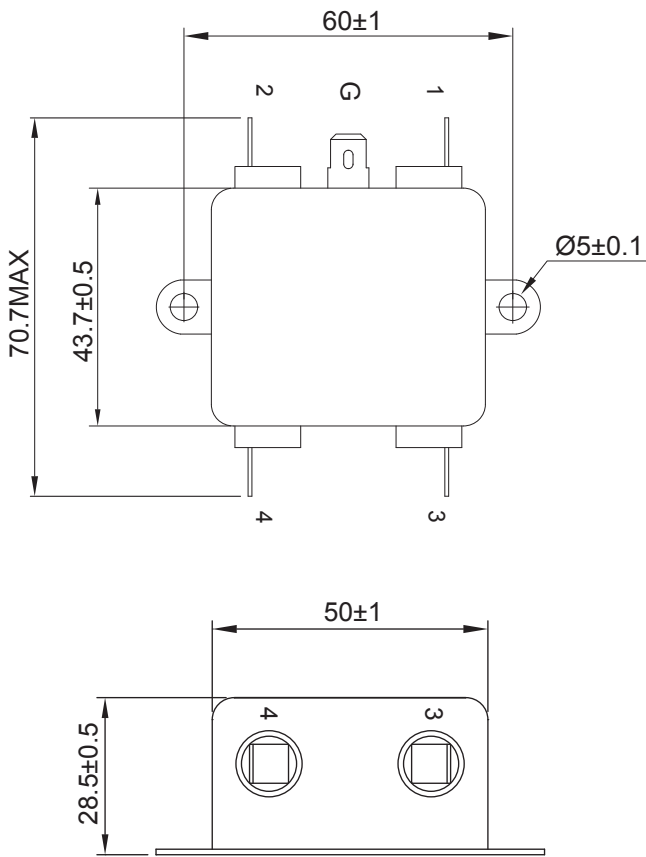


## Filter Selection Table

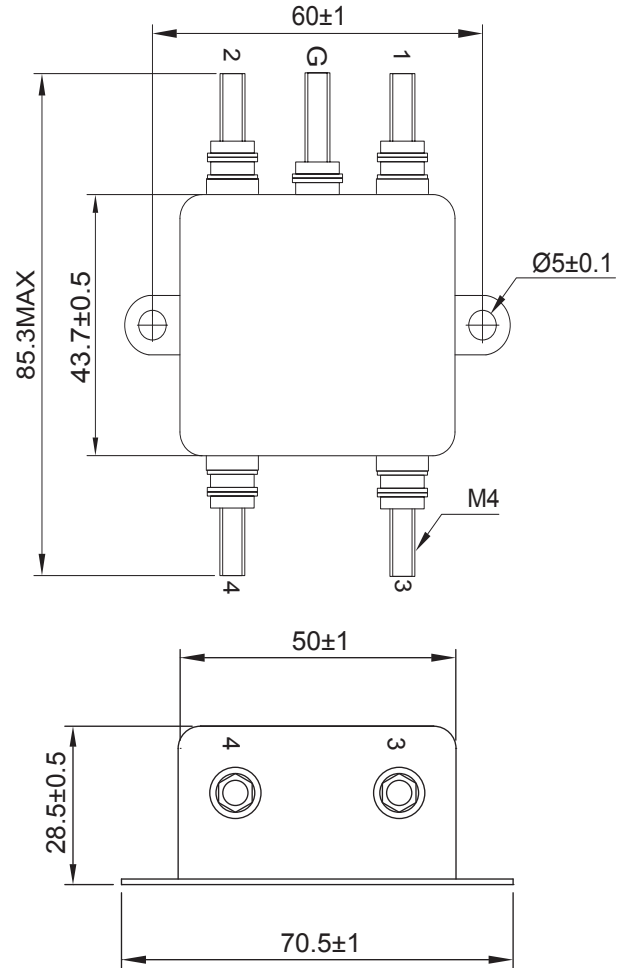
Part No.	Rated Current (A)	Inductance L(mH)	Capacitance CX(μF)	Capacitance CY(pF)	Resistance R(ohm)	Output connections
YC05T1	5	1.7	0.1	3300	10M	Fast-on terminal
YC10T1	10	1.2	0.1	3300	10M	
YC15T1	15	0.9	0.1	3300	10M	
YC20T1	20	0.5	0.1	3300	10M	
YD05T4	5	1.7	0.1	3300	10M	M4 Screw terminals
YD10T4	10	1.2	0.1	3300	10M	
YD15T4	15	0.9	0.1	3300	10M	
YD20T4	20	0.5	0.1	3300	10M	

# Physical Dimensions: (mm)

YC-T1

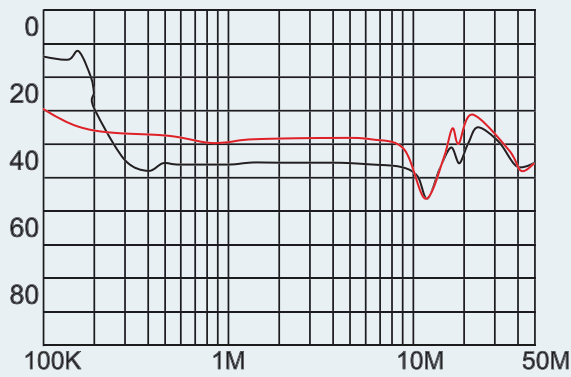


YD-T4

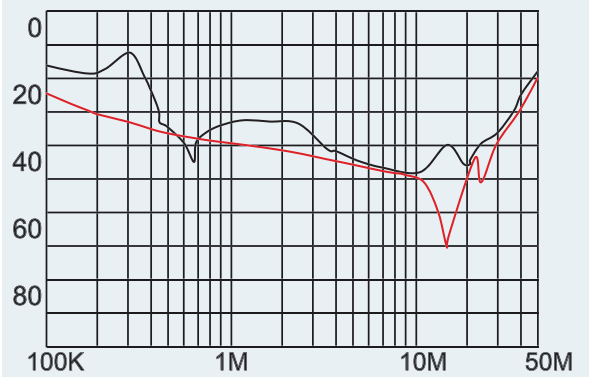


## Typical filter attenuation (Common mode — Normal mode —)

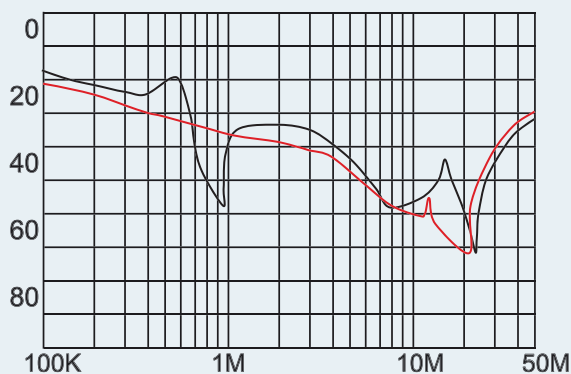
YC, YD-05



YC, YD-10



YC, YD-15



YC, YD-20

